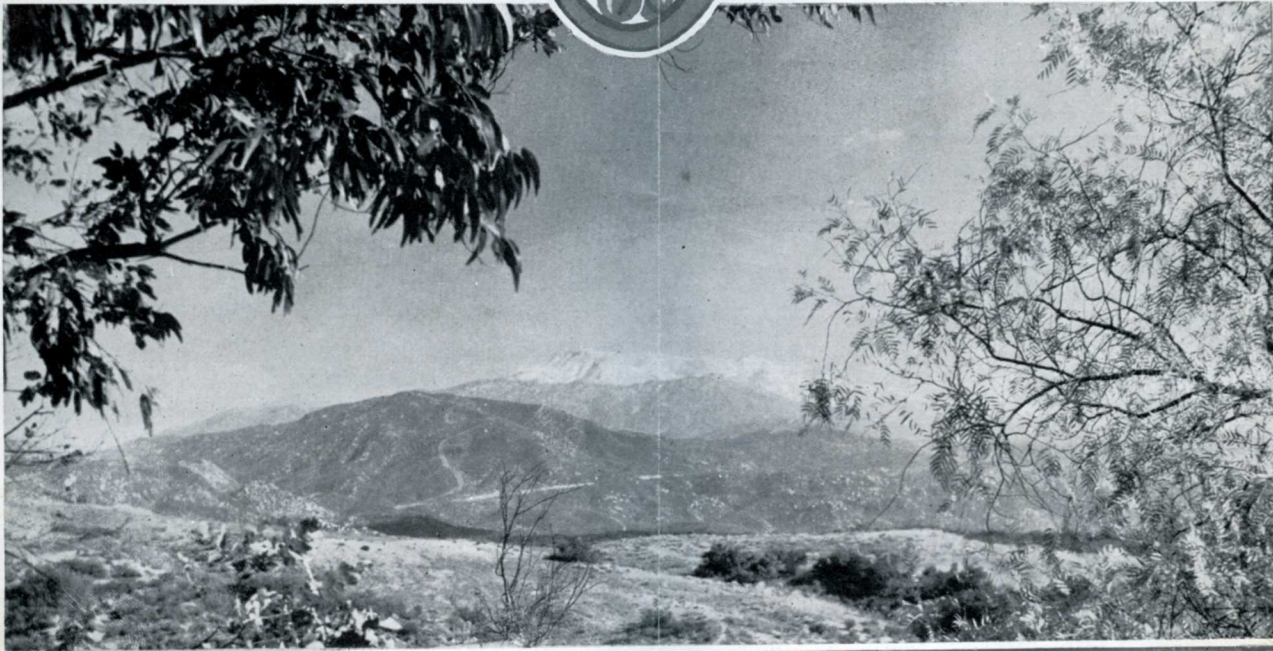


# BEAUMONT

RIVERSIDE COUNTY  
CALIFORNIA





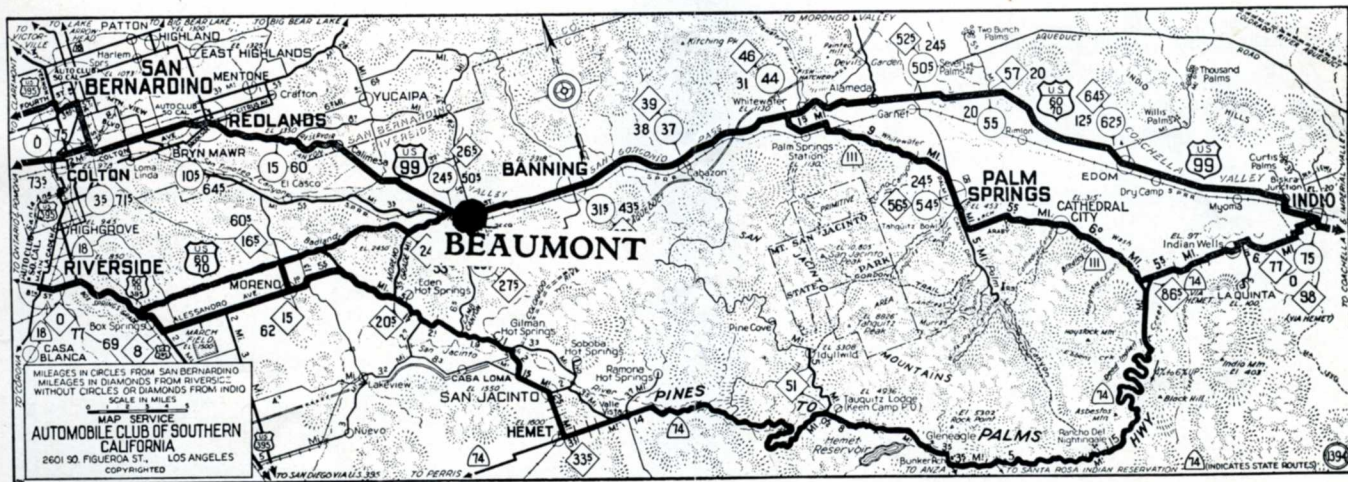


*Here is an unusual view of Mt. San Jacinto, snow-capped sentinel overlooking Beaumont Valley. Summit is 10,085 feet, second highest mountain peak in Southern California.*

## TO HOME SEEKERS

Beaumont welcomes an investigation. It would take volumes in addition to this folder to portray the many advantages of living in Beaumont. Many of the residents have been here for years, many more come each year, and remain. The entire community joins in extending you an invitation to come. Look over this folder, then write to the Chamber of Commerce for additional information.

Printed June, 1937, The Beaumont Gazette



*Map shows Beaumont strategically located at the junction of U. S. Highways 60, 70, and 99, following the same route through San Geronimo Pass, the principal gateway through the mountains to the coast section of Southern California.*

